

AUTOLOCKING KIT FOR HEAVY ROLLER SHUTTER

D690G

**Features**

Stator: nickel-plated steel.

Keys and barrel: galvanized steel. Nut: brass.

Use

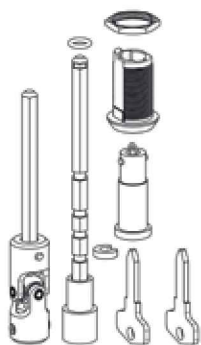
Mounted on the trunk in front of the motor head: allows secure access.

For mounting: make a hole \varnothing 21 minimum on the inspection door.

REF.	PACK.
D690G	20

EMERGENCY OPERATION SET

F699E

**Features**

Set composed:

- An indexed knee brace: F768G
- Autolock kit Ref. D690G
- 6 mm. hex. rod with crimped funnel sleeve.

Use

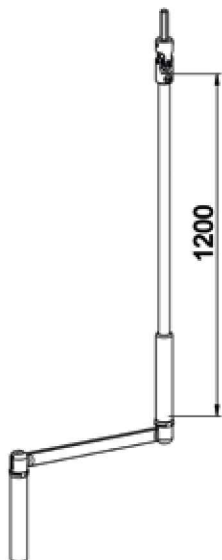
Compatible with box: 205 - 230 - 250 - 300.

The 6 mm. hex. rod with funnel sleeve is mounted on the motor head: the funnel shape facilitates the engagement of the 7 mm. hex. rod mounted on the knee.

REF.	PACK.
F699E	20

ASSEMBLED CRANK HANDLE FOR EMERGENCY OPERATION

E590

**Features**

Assembled with:

- Knee handling relief Ref. F768A
- Lacquered = 1200 handle
- Crank arm profile galvanized black
- Packaged in individual bag.

Use

Used primarily with invisible emergency handling exits.

REF.	COLOR	PACK.
E590	White RAL 9010	25
E590A	Brown RAL 8017	25